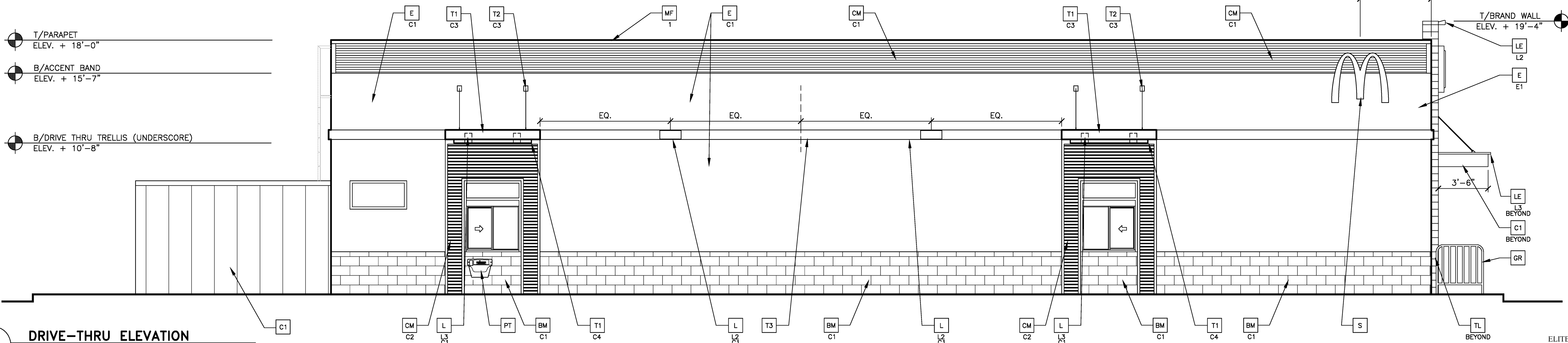


1
A2.0
NON-DRIVE-THRU ELEVATION
1/4" = 1'-0"



2
A2.0
DRIVE-THRU ELEVATION
1/4" = 1'-0"

ELITE CONSTRUCTION GROUP
LAKE JACKSON, TX
PHONE: 979-285-0712
NOTE: THESE PRINTS HAVE BEEN
REDUCED BY 50 PERCENT. SCALE
WILL BE 50 PERCENT OF WHAT IS
NOTED ON PLANS

COLOR SCHEME: 'MODERN' SCHEME
(SEE ELEVATION KEYNOTES FOR MATERIALS AND COLOR SPECIFICATIONS)

KEY NOTES:

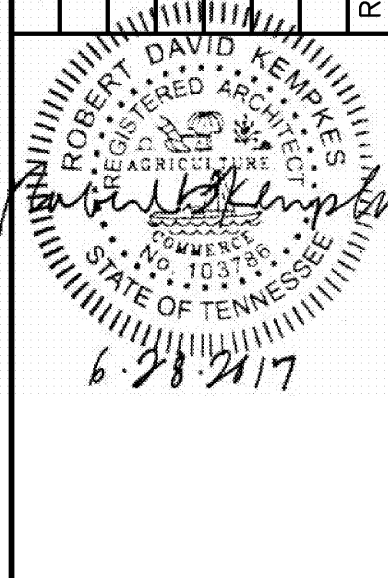
- [BM] CMU
XX-TYPE:
E1 = EXISTING UNPAINTED MASONRY
C1 = PAINTED MASONRY-COLOR: CHELSEA GRAY HC-168
- [C] ALUMINUM CANOPY FASCIA SYSTEM
COLOR: WHITE
- [CJ] CONTROL JOINT
X-TYPE:
1 = MATCHING SPACING OF EXISTING EIFS BELOW OR
SPACE PER MFR'S RECOMMENDATIONS
- [CM] CORRUGATED METAL PANEL - SEE ASSEMBLY NOTES ON
A3.0 FOR ADDITIONAL SPECIFICATIONS
XX-COLOR:
C1 = "CITYSCAPE"
C2 = "CHARCOAL GRAY" (DT WINDOW SURROUND ON
UNPAINTED BRICK BASE BUILDING)
- [CS] OUTSIDE CORNER STRIPS
RONDEC ROTOTSDA BY SCHLUTER SYSTEMS
ALUMINUM; HEIGHT: 10MM COLOR: DARK ANTHRACITE
CONTACT: EARL MAICUS (501) 324-3410
- [D] HOLLOW METAL DOOR - PAINT TO MATCH COLOR
OF SURROUNDING MATERIAL
- [E] EXTERIOR INSULATION FINISH SYSTEM (E.I.F.S.)
'OUTSULATION PLUS MD' BY DRYVIT OR EQUAL
XX-HIGH IMPACT ZONES: 'PANZER 20' ULTRA HIGH IMPACT MESH
ASSEMBLY FOR EIFS AREAS WITHIN 8'-0" OF GRADE
FINISH: HYDROPHOPIC TEXTURE: SANDPEBBLE
COLOR: STATOTONE HIGH PERFORMANCE COLORANT -
MATCH TO BENJAMIN MOORE OR EQUAL
C1 = CHELSEA GRAY HC-168 BY BENJAMIN MOORE
C2 = IRON MOUNTAIN 2134-30 BY BENJAMIN MOORE
- [GR] GUARDRAIL

- [L] LIGHT FIXTURE - SEE ELECTRICAL
XX-TYPE:
L1 = UP AND DOWN SCONCE
L2 = DOWN ONLY SCONCE
L3 = RECESSED DOWN FIXTURE
COLOR:
C1 = SILVER
C2 = WHITE
- [LE] ACCENT LIGHTING - SEE ELECTRICAL
XX-LED LIGHT:
L1 = UP AND DOWN FIXTURE
L2 = DOWN ONLY FIXTURE
L3 = INTEGRAL CANOPY FIXTURE
L4 = FLOOD LIGHT
- [MF] METAL FASCIA (COLOR: CITYSCAPE) SEE 4/A3.2
X-TYPE:
1 = PRE-FAB ANCHOR-TITE FASCIA
2 = PRE-FAB CUSTOM ARCADE FASCIA
- [ML] METAL LETTERING - BY OTHERS
X-TYPE:
1 = "WELCOME" - COLOR: SILVER
2 = 24"H x 3/4" THICK METAL ARCH
COLOR: PANTONE 123C
- [MJ] EXISTING MECHANICAL SCREEN
- [PB] PIPE BOLLARD - PAINTED YELLOW
- [PT] PASS-THRU COIN COLLECTOR - OPTIONAL (RMHC)

- [RO] ROOF DRAIN OVERFLOW PIPE
PAINT TO MATCH SURROUNDING MATERIAL
- [S] McDONALD'S SIGNAGE BY OTHERS - UNDER
SEPARATE PERMIT. SEE SIGNAGE SUPPORT NOTE
ON THIS SHEET.
- [TL] TILE
EUROWEST: E-WOOD COLLECTION
COLOR: R9 BLACK SIZE: 6"x36" 1/4 RUNNING BOND
WATERPROOFING SETTING MATERIAL AND GROUT: BY MAPEI
GROUT COLOR: ULTRA COLOR PLUS - 47 CHARCOAL
GROUT WIDTH: 1/8" TO 3/16"
CONTACT: JAN DETER, (714) 937-7500
- [T1] ALUMINUM TRELLIS SYSTEM
XX-COLOR:
C1 = CITYSCAPE
C2 = WHITE
C3 = CHARCOAL
C4 = GOLD
- [T2] ALUMINUM TRELLIS TIE-BACK SYSTEM
XX-COLOR:
C1 = CITYSCAPE
C2 = WHITE
C3 = CHARCOAL
- [T3] ALUMINUM TRELLIS 2" x 8" WALL FASCIA SYSTEM
COLOR: CITYSCAPE
- [W1] NEW STOREFRONT AND GLAZING
1-1 = NEW STOREFRONT AND GLAZING -
SEE ASSEMBLY NOTES
2 = EXISTING WINDOW TO REMAIN

SHEET NO.	TITLE	DRAWN BY AJO	STD ISSUE DATE NOV. 2015	REVIEWED BY R.K.	DATE ISSUED 06-28-2017	SITE ADDRESS 041-0760 21320 HWY 22 Forkers Crossroads WILDERVILLE, TN	DESCRIPTION	REV	DATE	BY

SHEET NO.	TITLE	DRAWN BY AJO	STD ISSUE DATE NOV. 2015	REVIEWED BY R.K.	DATE ISSUED 06-28-2017	SITE ADDRESS 041-0760 21320 HWY 22 Forkers Crossroads WILDERVILLE, TN	DESCRIPTION	REV	DATE	BY



PREPARED BY:
Taylor Kempkes
ARCHITECTS, P.A.
30 CENTRAL AVE. SUITE 200
NASHVILLE, TN 37203
TEL: 615.259.4679
FAX: 615.259.4679

PREPARED FOR:
McDonald's USA, LLC
© 2015 McDonald's USA, LLC
These drawings and specifications are the confidential and proprietary
property of McDonald's USA, LLC and shall not be copied or reproduced
without written authorization. The contract documents were prepared
for the use of the project and are not to be used for any other project. Use of
these drawings for reference or example on another project requires the
contract documents for reuse on another project is not authorized.